

ADDENDUM

PROJECT	NKU New Residence Hall	ADDENDUM NO.	3
PROJECT NO.	18237.01	DATE	02/21/2020
TO	Brian Groneck	FROM	Dan Bossenbroek

DESCRIPTION:**I) DRAWING REVISIONS:****VOLUME 1****1) G007 WALL TYPES AND DETAILS**

- A) Revised wall types schedules to indicate resilient channel spacing.
- B) Revised wall type 4J.

2) S001 GENERAL STRUCTURAL NOTES

- A) Drilled piers require 4,000 psi concrete. Revise Note D.1.a to read, "Footings and Gradebeams: 3,000 PSI".

3) A001 LEVEL 01 - FLOOR PLAN

- A) Added Exterior Storefront Elevation tag.

4) A501 WALL SECTIONS

- A) Revised Section 2.

5) A520 EXTERIOR DETAILS

- A) Revised Details 1, 2.

6) A521 EXTERIOR DETAILS

- A) Revised Details 2, 3, 5, 7, 11 & 12.

7) A522 EXTERIOR DETAILS

- A) Revised Details 2, 3, 4 & 5.

8) A523 EXTERIOR DETAILS

- A) Revised Details 1, 5, 11, 14, & 15.

9) A721 EXTERIOR STOREFRONT ELEVATIONS

- A) Revised Elevations 2, 3, 5, 7 & 8.

10) A731 EXTERIOR DOOR AND WINDOW DETAILS

- A) Revised Details 6, 11, 12, 13, 18 & 19.
- B) Deleted Details 7 & 8.

11) A900 FINISH SCHEDULE

- A) Revised Miscellaneous material PL1 in the Finish Legend. Comments = Common Area Kitchen.
- B) Please note that SS1 is the finish material for Countertops at Units.

12) A920 INTERIOR ELEVATIONS – COMMON AREA LOBBY & STUDY

- A) Renumbered detail 8 to 8A; Added interior elevation (numbered 8B) for small Study Room Visual Display Board walls.

13) A940 INTERIOR SIGNAGE

- A) Revised all interior signage details.



VOLUME 2**1) P200 ENLARGED MECHANICAL ROOM PLAN - PLUMBING**

- A) Refer to the water meters shown on viewport 2.
 - (1) Main water meter for the 4" domestic water service: Neptune Tru/Flo Compound meter 4" size, 4psi pressure drop at 200 GPM
 - (2) Geothermal water meter, 1-1/4" pipe size: Neptune T-10 meter, 1" size, 4 psi pressure drop at 34 GPM
 - (3) Irrigation Water meter, 1-1/4" pipe size: Neptune T-10 meter, 1" size, 4 psi pressure drop at 34 GPM

II) SPECIFICATION REVISIONS:**VOLUME 1****1) TABLE OF CONTENTS**

- A) Removed Section 31 31 16 Termite Treatment
- B) Removed Section 32 31 31 Trash Dumpster Enclosure

2) Section 00 24 13

- A) Section 00 24 13 Exterior Scope Clarification attachment shall be utilized as an aid to the scope description for the respective bid category. The Exterior Scope Clarification attachment takes precedent over any scope descriptions that were previously provided.
- B) Revise Note 7.f. on 00 24 13 - 69/80 to read "Include break-metal cover per detail 8/A820.
- C) Add Note 51. The BC-04 Contractor shall provide concrete box-outs for the Mechanical Chases (MC) (10) per floor on S102, S103, S104, S105, and (4) additional box-outs on S106.
- D) Revise Note 17. On 00 24 13 – 10/80 to read: BC-01 shall cut the metal decking at each location 7 days after the concrete has been poured per the typical slab opening on S003
- E) Add Note 29. on 00 24 13 – 23/80 to read: The BC-02 contractor shall remove the temporary sidewalks that are to be provided by the BC-01 Subcontractor as shown on the site logistics plan.
- F) Add Note 8. On 00 24 13 – 79/80: This scope includes roller shades per the RS01 and RS02 drawings provided with Addendum No. 3.

3) 01 23 00 ALTERNATES

- A) Added paragraph 2.1 A. 6. To read:
 "Alternate No. 6: Provide painted finish for 08 40 00 ALUMINUM FRAMING SYSTEMS and 08 41 13 ALUMINUM-FRAMED ENTRANCES AND STOREFRONTS."

4) 08 40 00 ALUMINUM FRAMING SYSTEMS

- A) Added paragraph 1.07 to read:
 "1.07 Provide manufacturer's finish guarantee.
 1. Base Bid: 10 years.
 2. Alternate: 20 Years."
- B) Revised paragraph 2.08 B. to read:
 "B. Base Bid: Class I Natural Anodized Finish"
- C) Added paragraph 2.08 C. to read:
 "C. Alternate: Finish: Fluoropolymer baked enamel finish with Kynar 500 (70%) resins by ELF ATOCHEM OF NORTH AMERICA INC.; "Trinar" by AKZO; "Duranar" by PPG; "Fluoropon" by VALSPAR. Total dry film thickness not less than 1.0 mils, or coatings meet or exceed the requirements of AAMA 2605.



1. Color: As selected by Architect from paint manufacturer's complete specified line.
2. Application: Apply coating systems in strict accordance with manufacturer's printed instructions and recommendations. Refer to Quality Assurance in Part 1.
3. Concealed members may be mill finished, providing they cannot be seen through the glass."

5) 08 41 13 ALUMINUM-FRAMED ENTRANCES AND STOREFRONTS

- A) Revised paragraph 1.07 B to read:
"B. Finish (**Alternate #6**): Provide paint manufacturer's guarantee"
- B) Added paragraph 1.07 C to read:
"**C. Finish (Base Bid): Warranty Period: 10 years.**"
- C) Revised paragraph 2.04 A. to read:
"A. **Alternate** Finish: Fluoropolymer"
- D) Added paragraph 2.04 B. to read:
"B Base Bid Finish: Class I Natural Anodized Finish: AAMA 611 AA-M12C22A41 Clear anodic coating not less than 0.7 mils thick
1. Comply with AA DAF-45 for aluminum finishes required."

6) 10 14 00 SIGNAGE

- A) Replace section in its entirety.

VOLUME 2

7) 23 02 00 HVAC EQUIPMENT

Refer to Part 3 – Outside Air Units. Add Reznor as an acceptable manufacturer.

ATTACHMENTS:

DRAWINGS

VOLUME 1: G007, A001, A501, A520, A521, A522, A523, A721, A731, A900, A920 & 940

SPECIFICATIONS

VOLUME 1: 00 24 13, 10 14 00

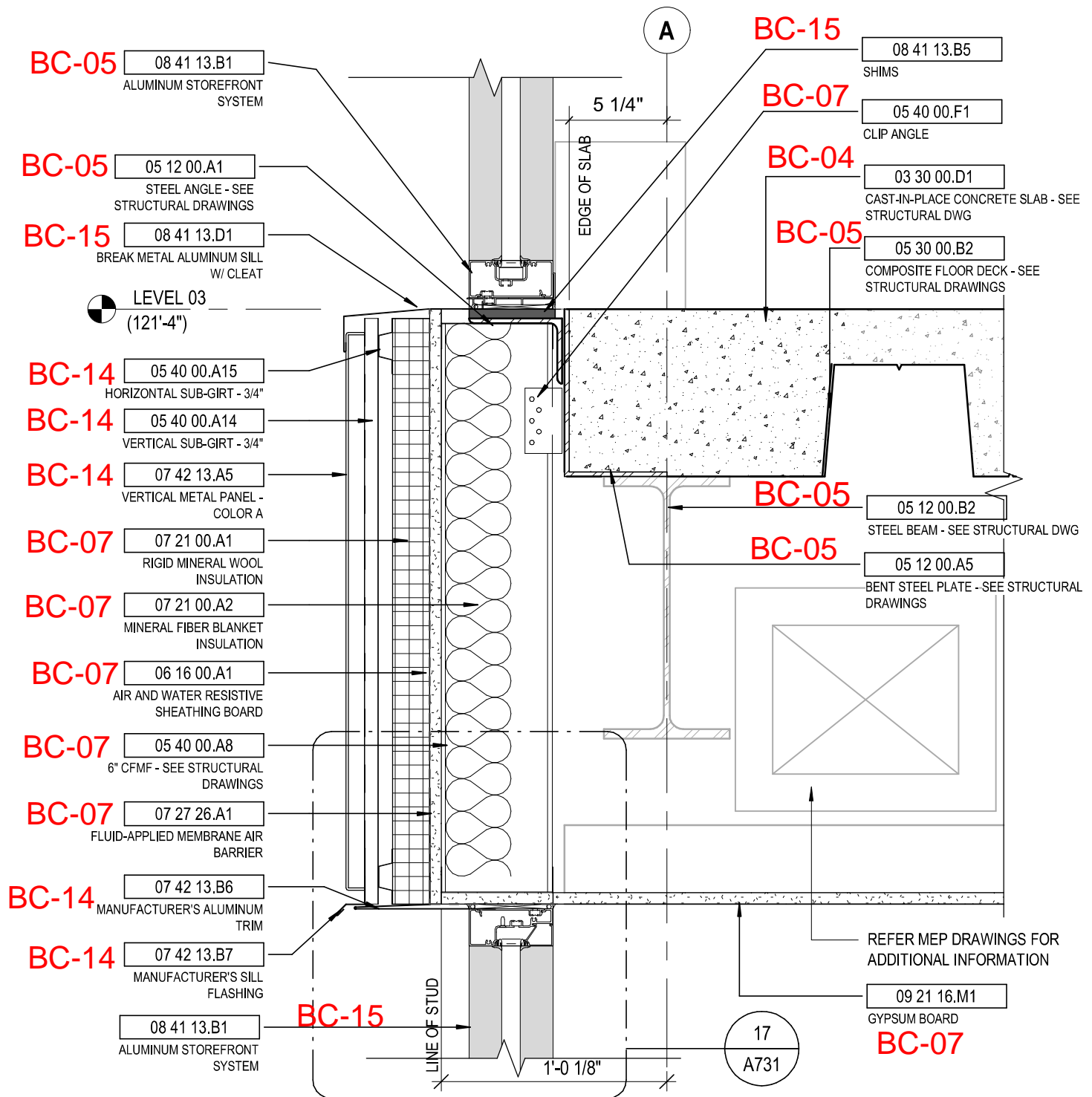
ATTACHMENTS

Roller Shade Location Diagram (RS01, RS02)

DISTRIBUTION:

Elizabeth Birkenhauer
Mary Paula Schuh
Blaine Gilmore
David Berland
Nick Rosianp
Yanitza Brongers-Marrero
Mike Albers





2

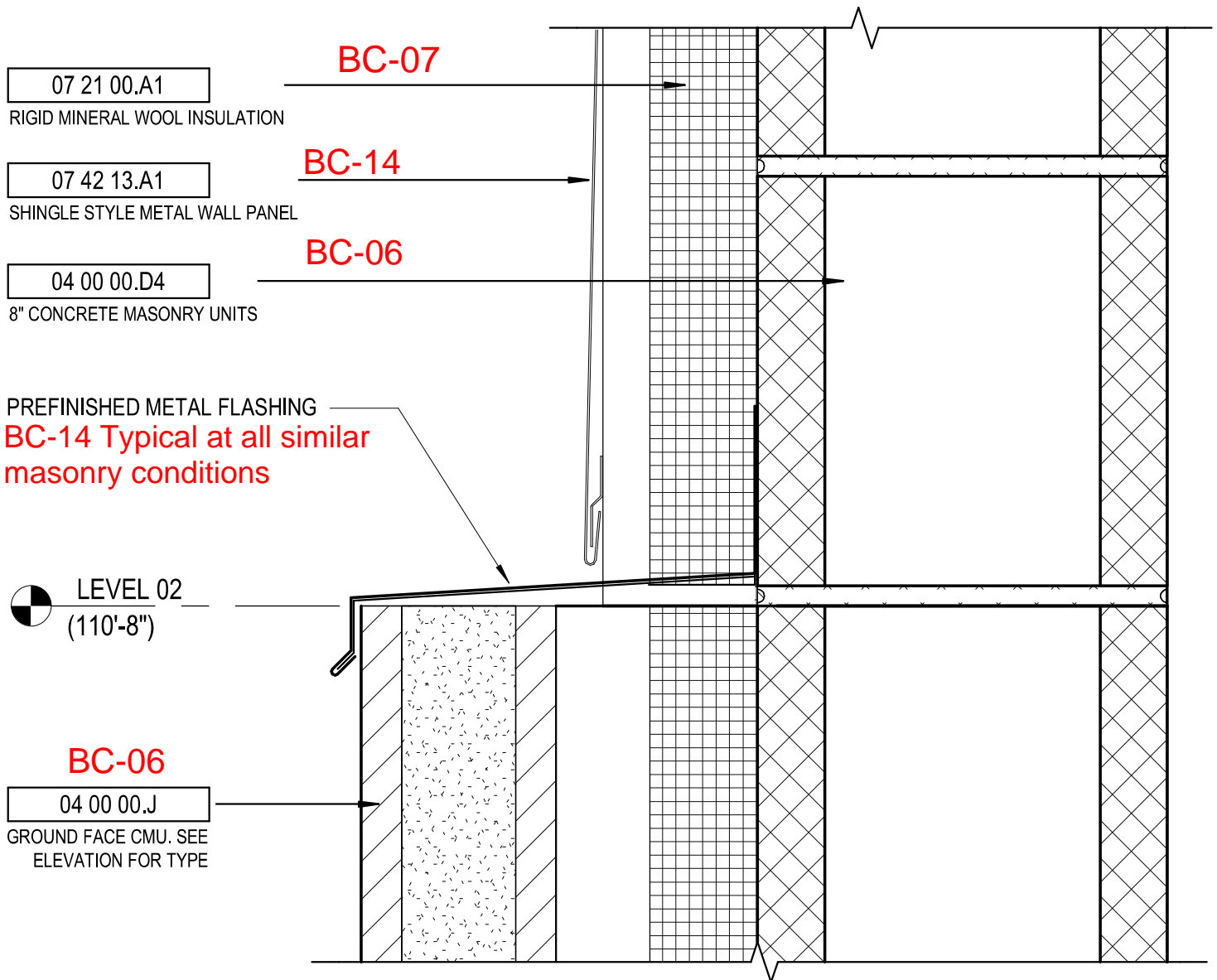
DETAIL

VERTICAL METAL PANEL & STOREFRONT @ INTERMEDIATE FLOORS

1 1/2" = 1'-0"

REF: 4 / A501

A731



5

DETAIL

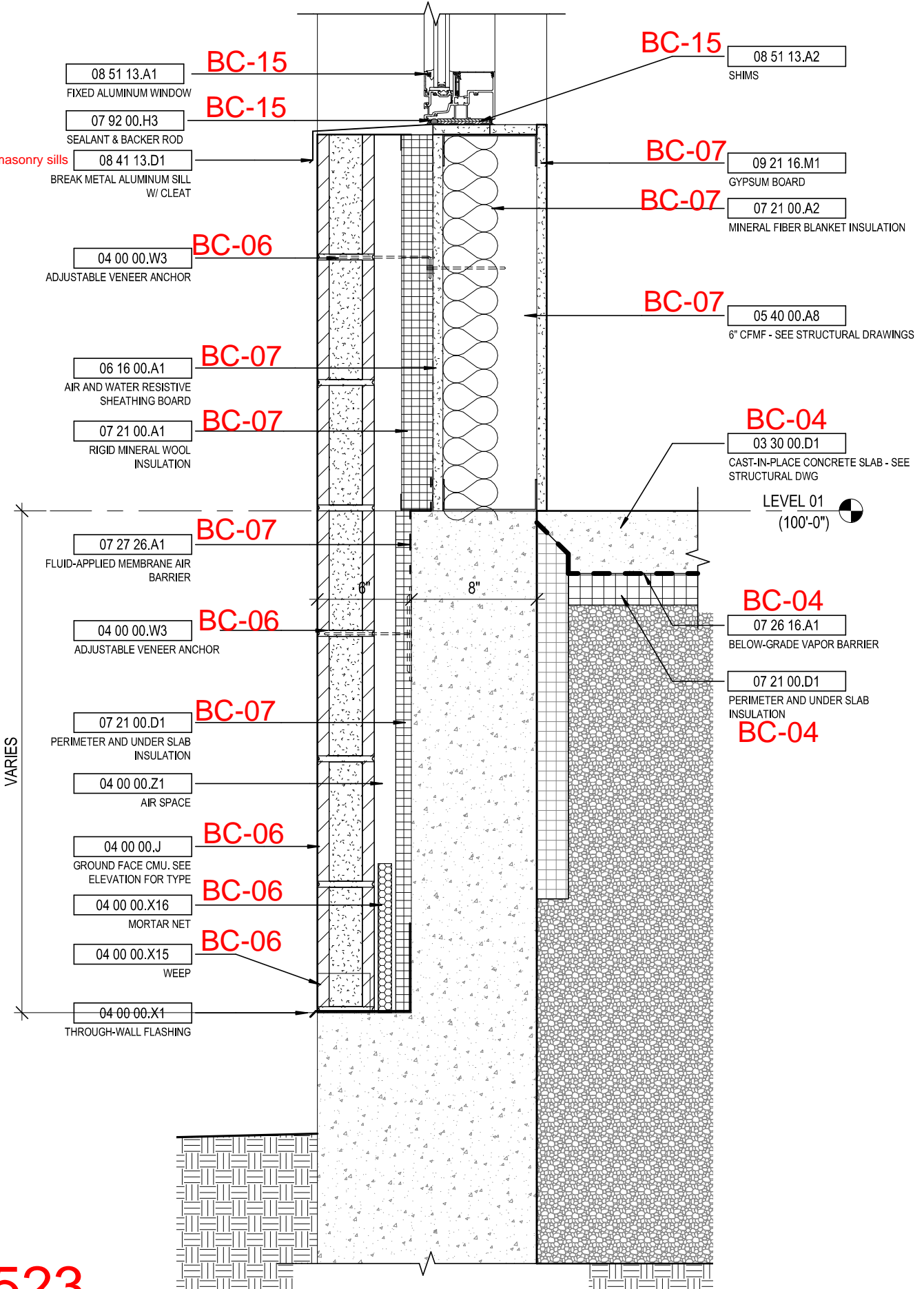
METAL SHINGLE TO GROUND FACE CMU TRANSITION

3" = 1'-0"

REF: 4 / A521

A523

BC-15 Typical at masonry sills



A523

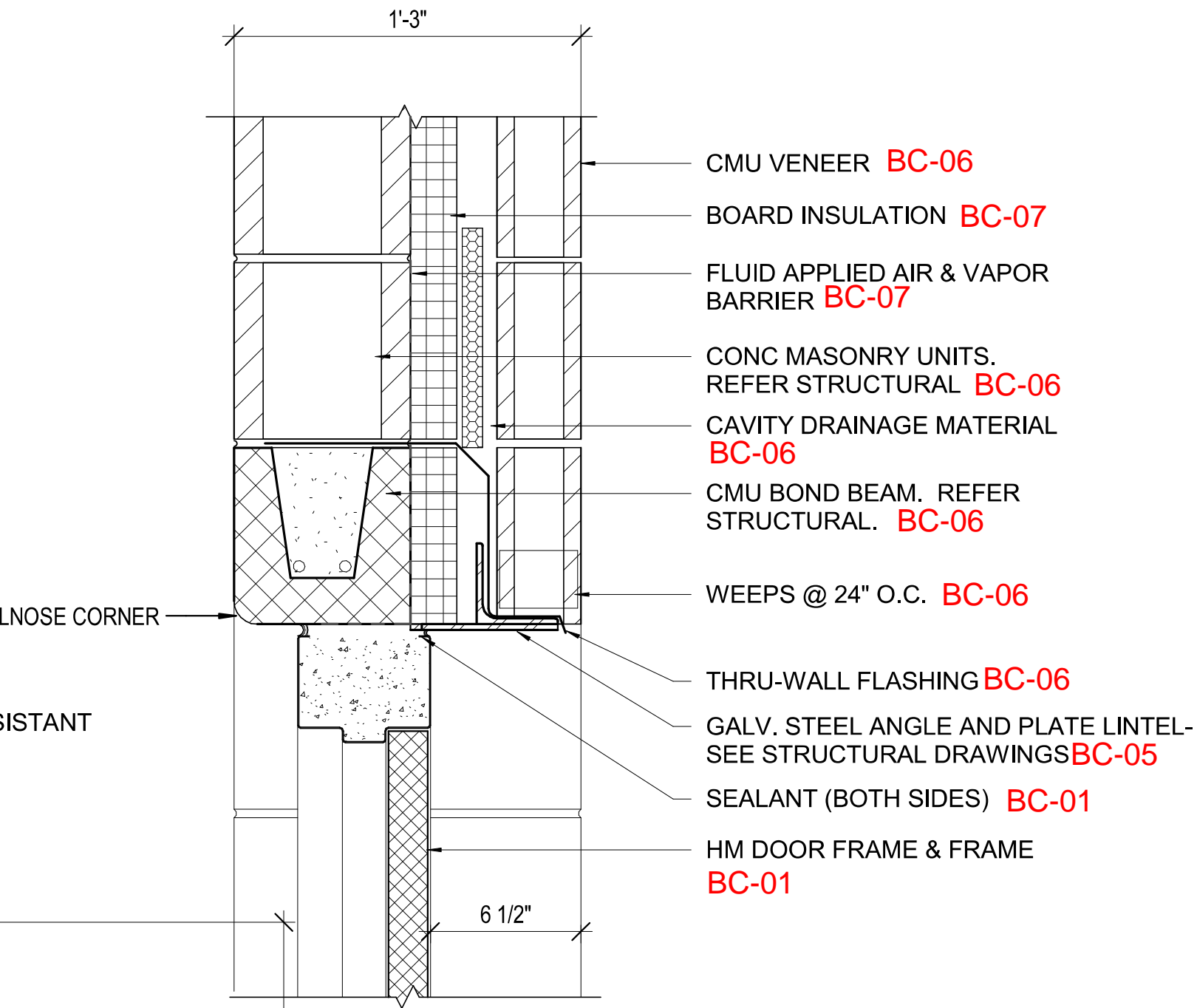
11

DETAIL

TYP. FOUNDATION AT NORTH WALL

1 1/2" = 1'-0"

REF: 4 / A502



ACER

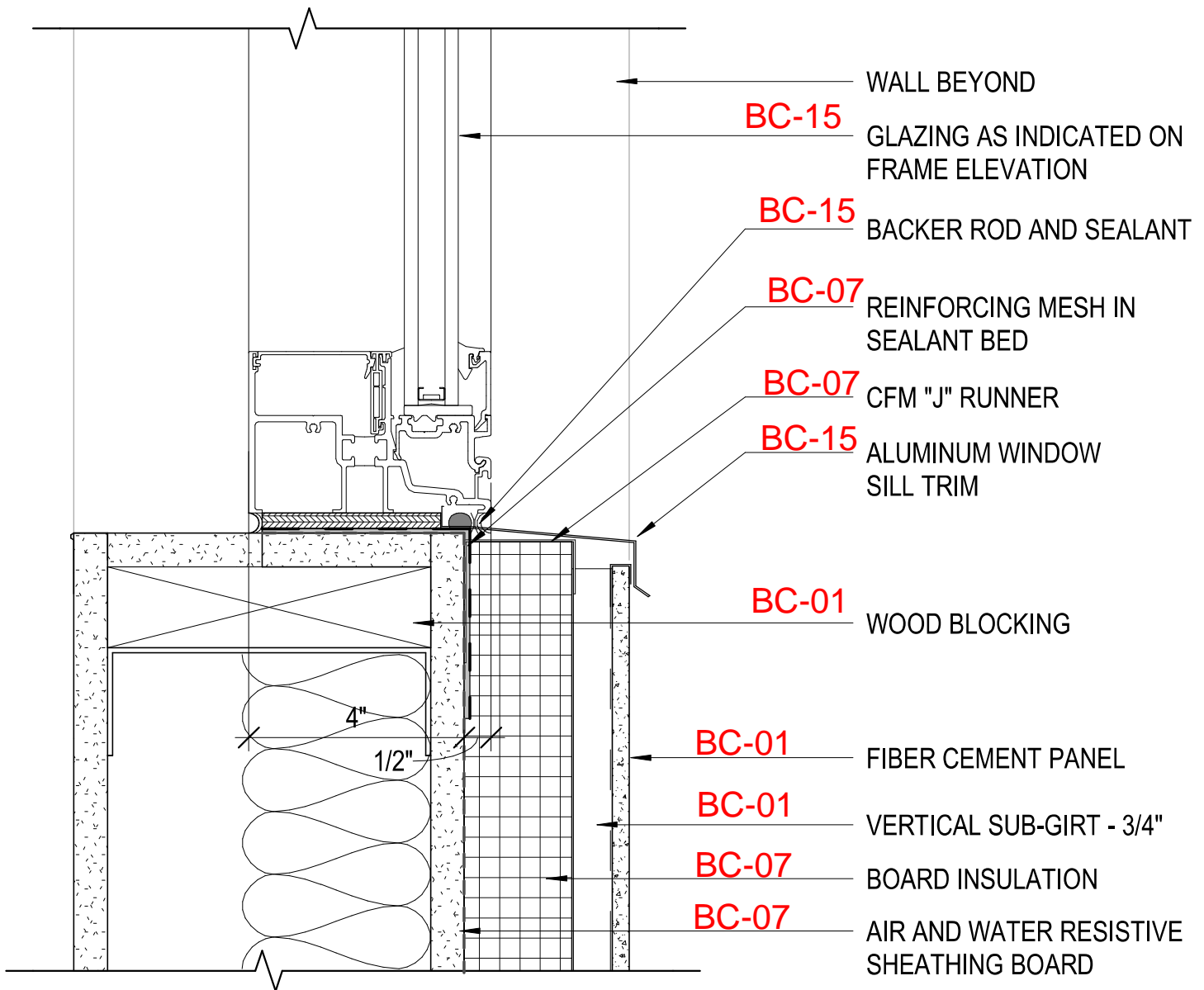
3

DETAIL

HM DOOR HEAD @ CMU VENEER

REF: 4 / A521

A731



9

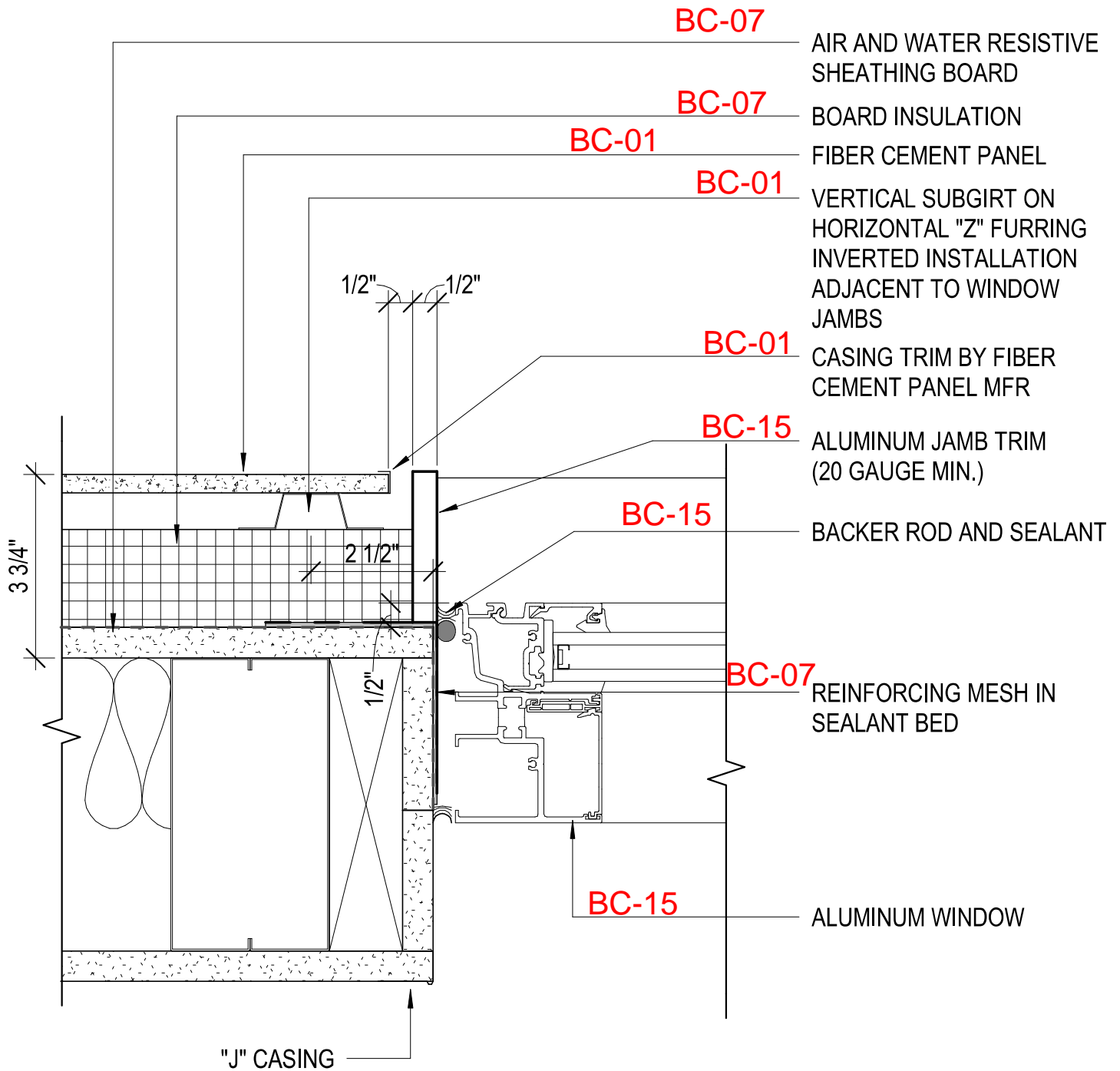
DETAIL

ALUM WINDOW SILL @ FIBER CEMENT PANEL

3" = 1'-0"

REF: 5 / A520

A731



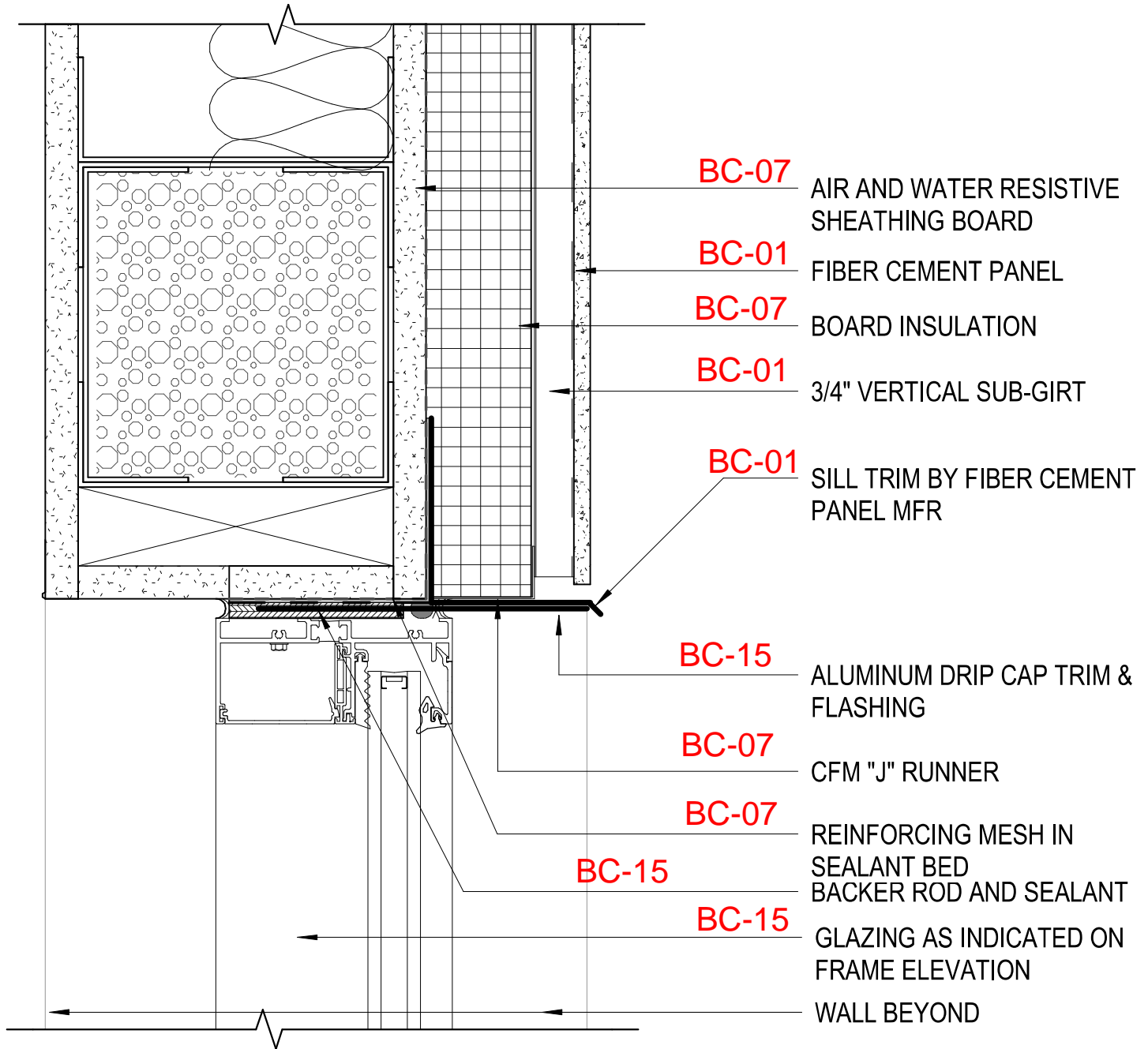
10

DETAIL

ALUM WINDOW JAMB @ FIBER CEMENT PANEL

3" = 1'-0"

REF: 12 / A521



11

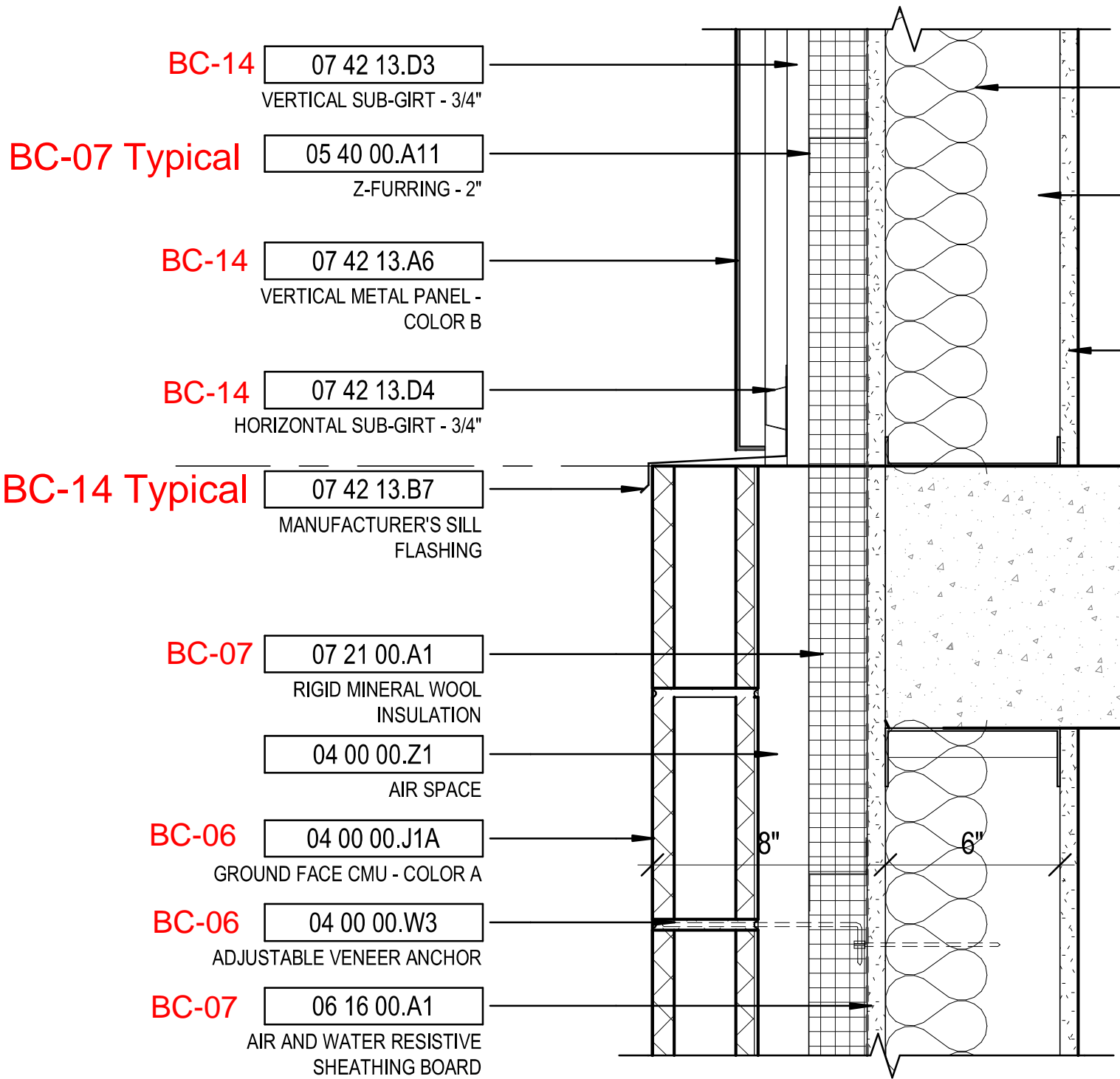
A731

DETAIL

ALUM WINDOW HEAD @ FIBER CEMENT PANEL

3" = 1'-0"

REF: 5 / A520



14

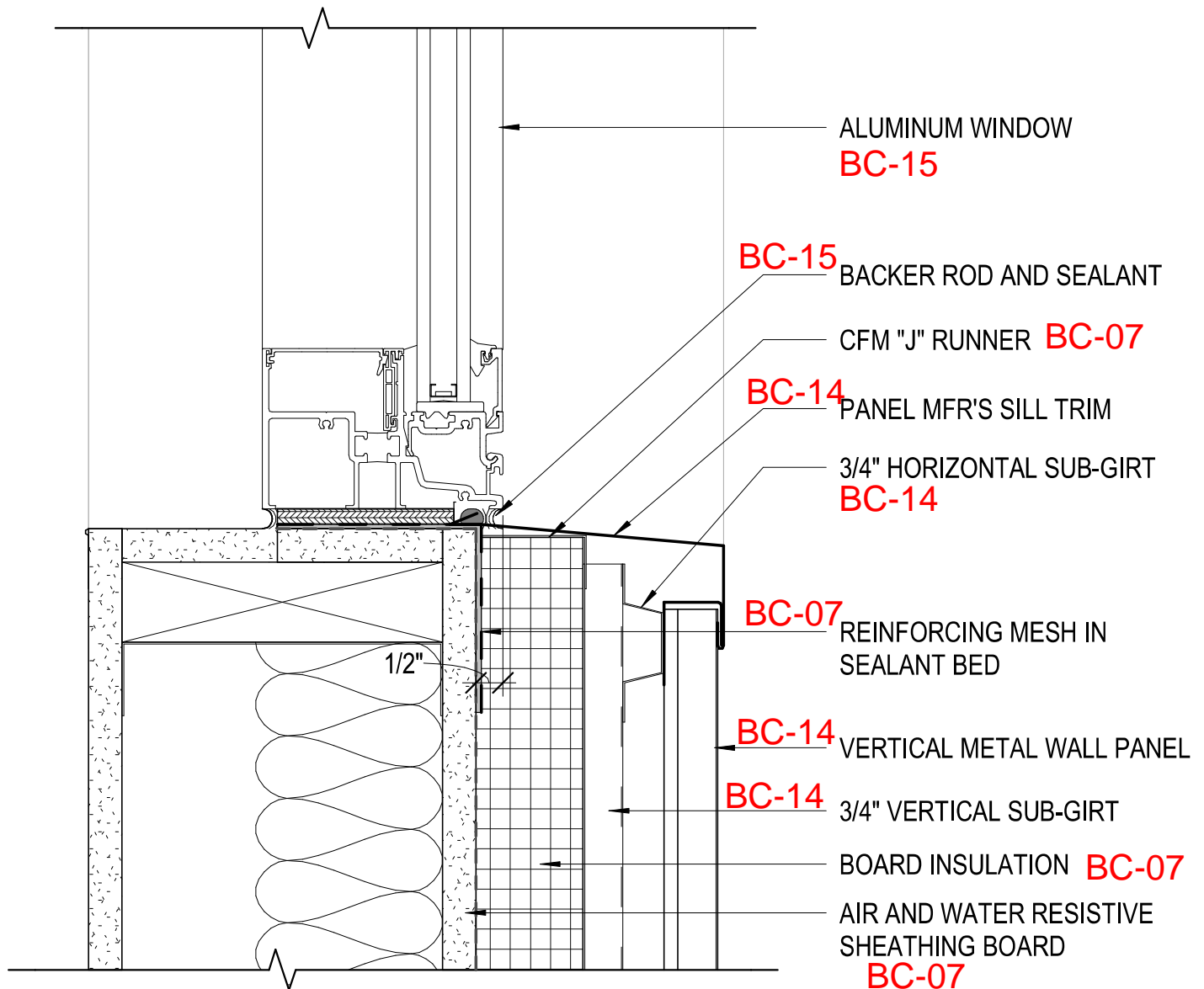
DETAIL

VERTICAL PANEL TO CMU TRANSITION

1 1/2" = 1'-0"

REF: 4 / A502

A523



15

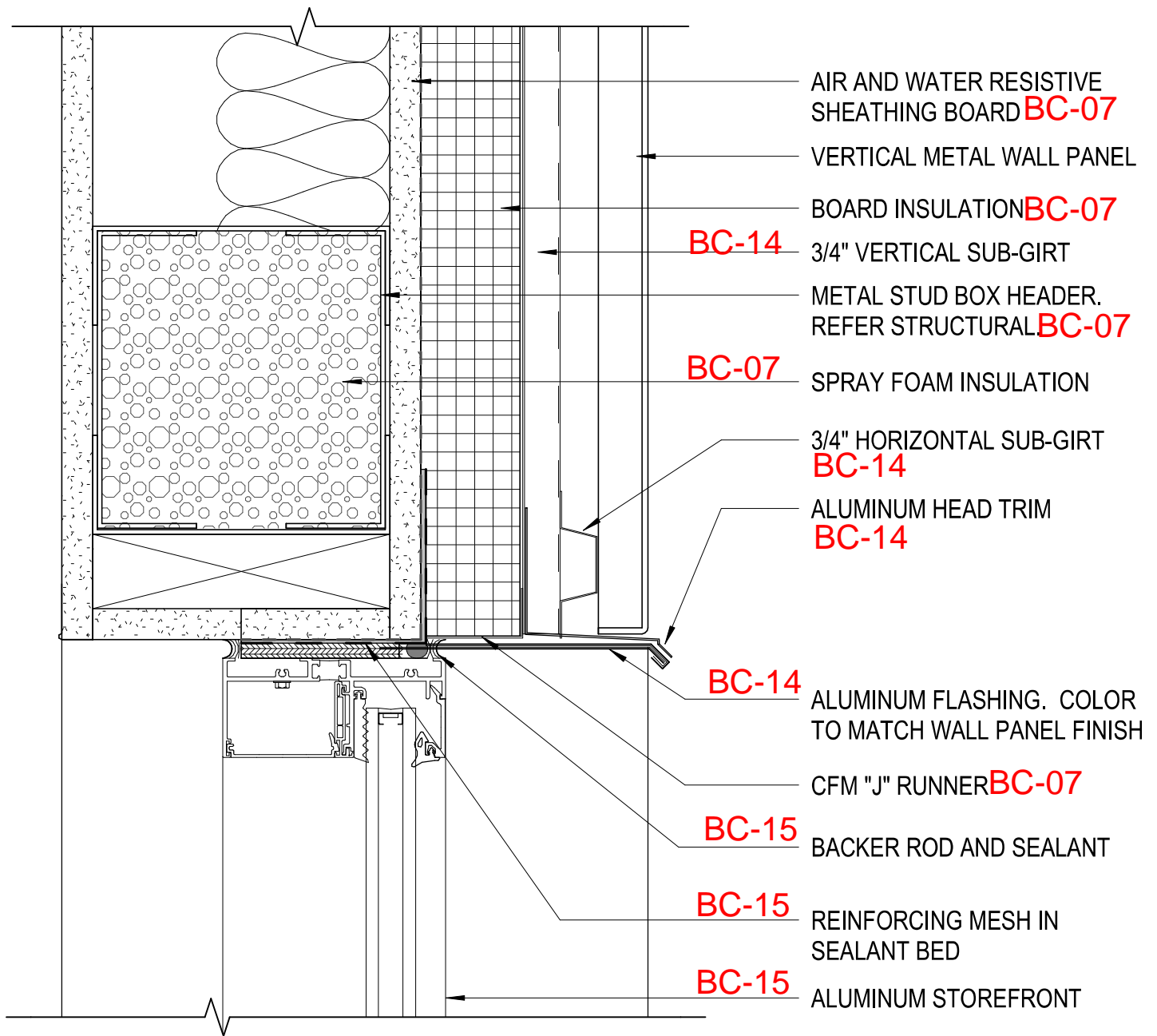
DETAIL

ALUM WINDOW SILL @ VERTICAL METAL PANEL

3" = 1'-0"

REF: 7 / A520

A731



17

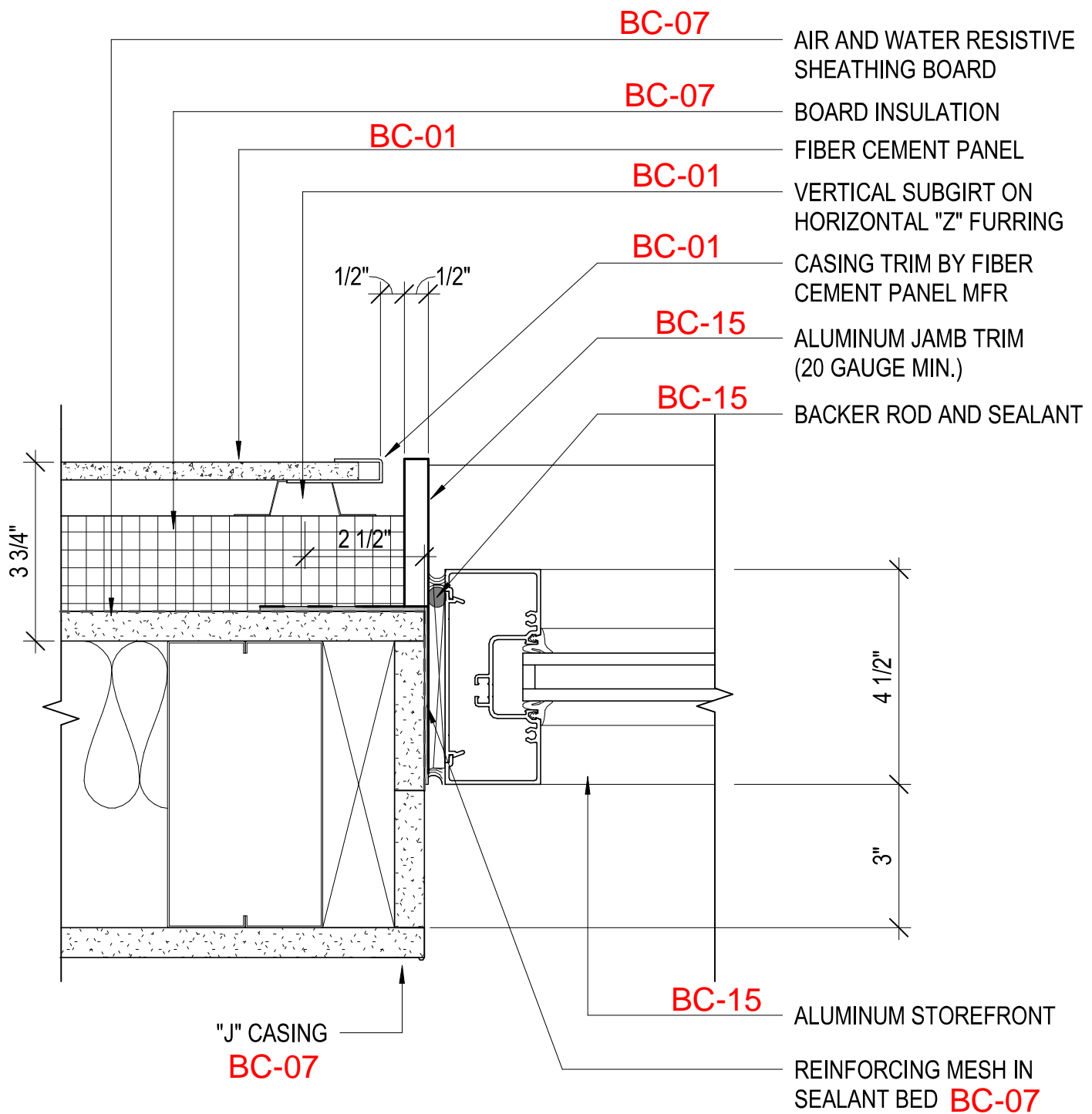
DETAIL

ALUM WINDOW HEAD @ VERTICAL METAL PANEL

3" = 1'-0"

REF: 4 / A501

A731



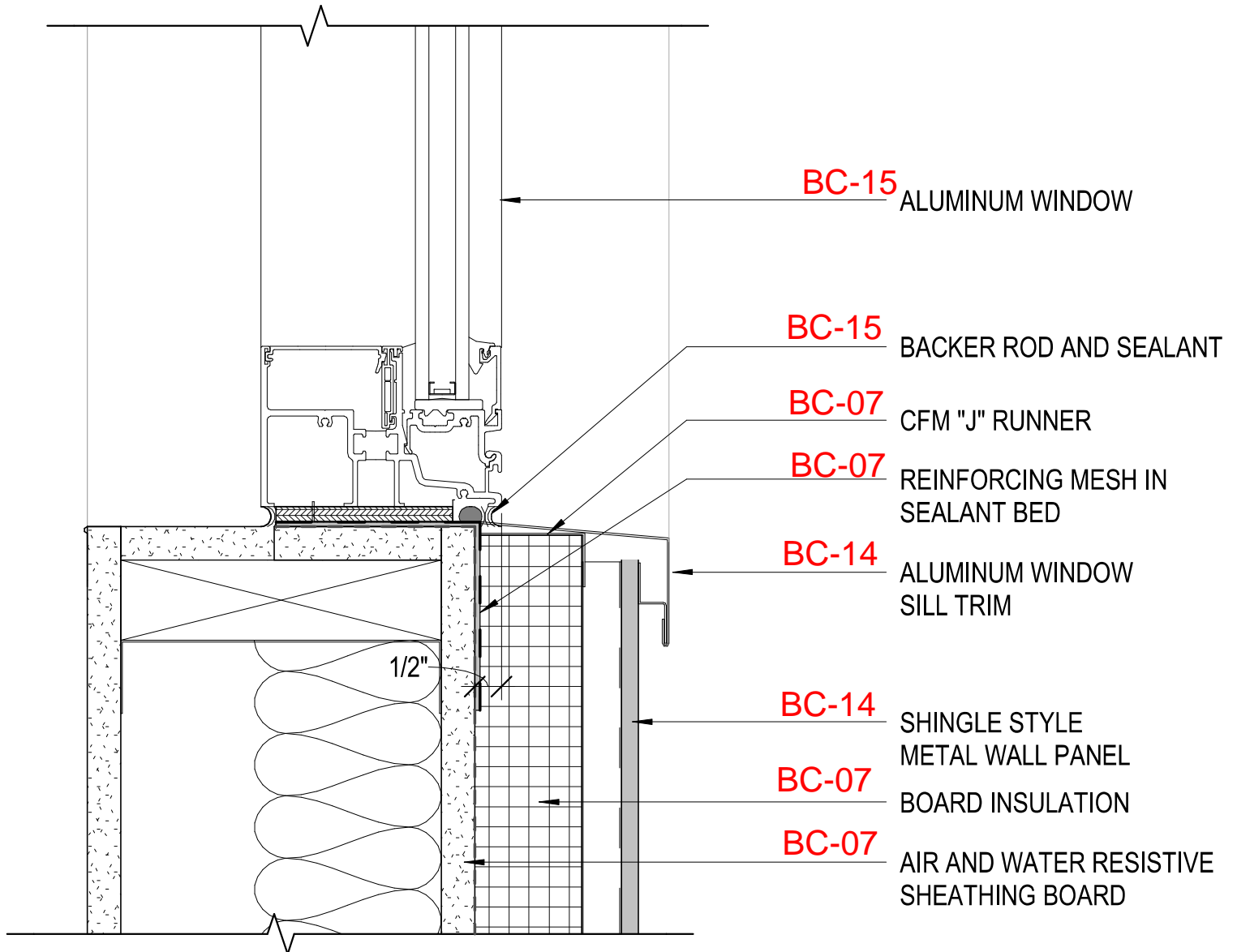
19

DETAIL

STOREFRONT JAMB @ FIBER CEMENT PANEL

3" = 1'-0"

A731



12

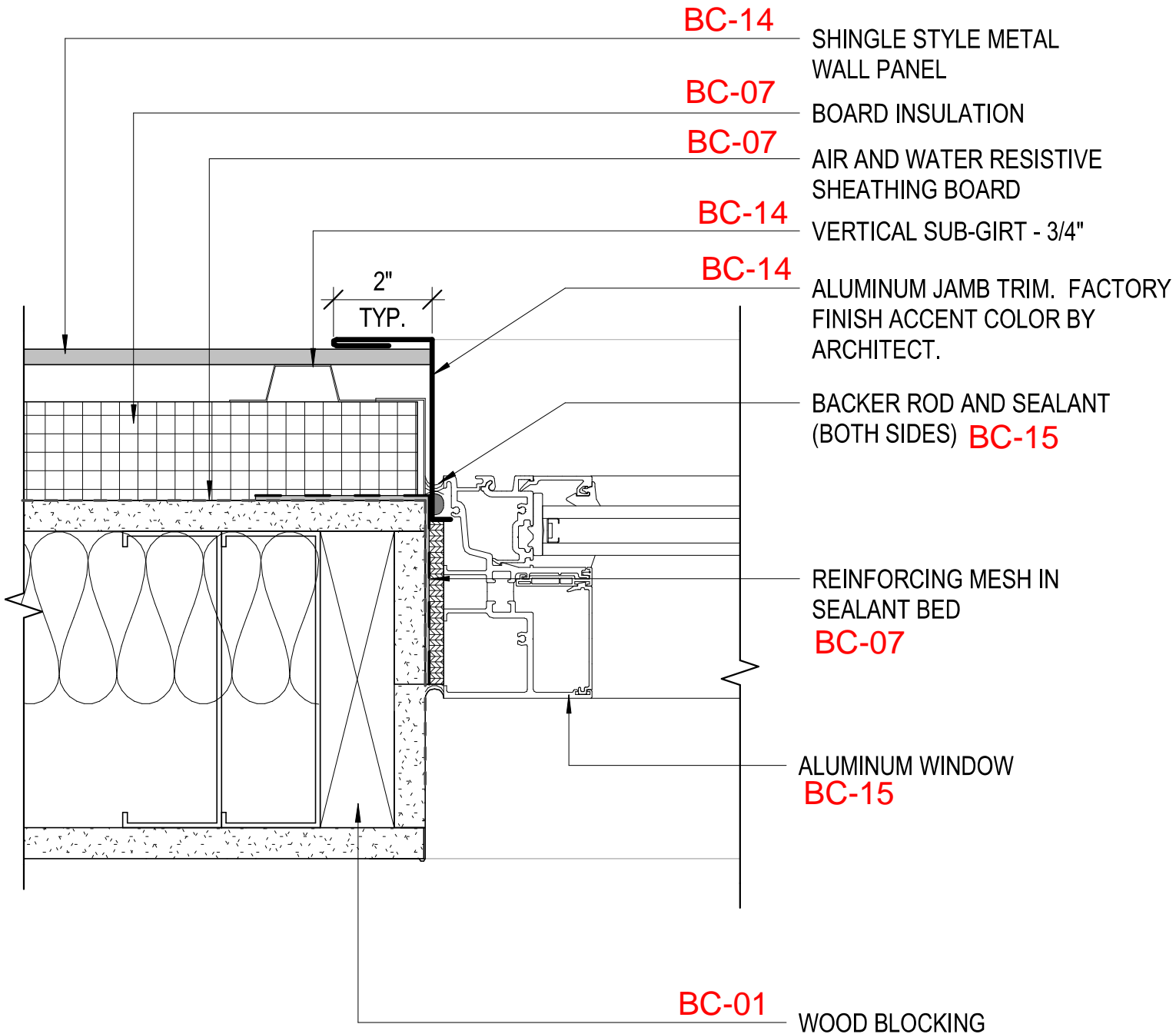
DETAIL

ALUM WINDOW SILL @ SHINGLE PANEL

3" = 1'-0"

REF: 1 / A520

A731



13

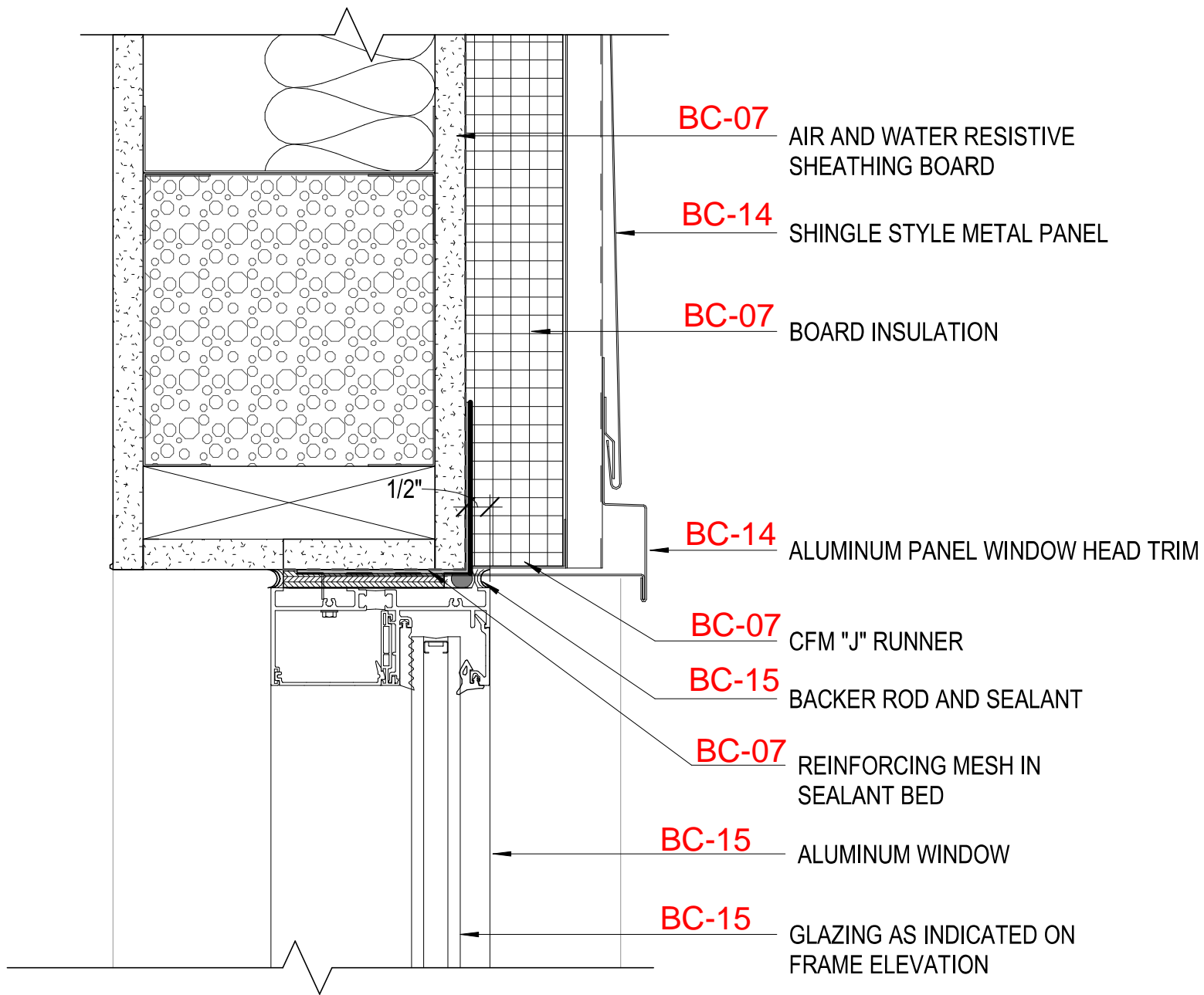
DETAIL

ALUM WINDOW JAMB @ SHINGLE PANEL

3" = 1'-0"

REF: 3 / A302

A731



14

DETAIL

ALUM WINDOW HEAD @ SHINGLE PANEL

3" = 1'-0"

REF: 3 / A302

A731

SECTION 10 14 00 - SIGNAGE

PART 1 GENERAL

1.01 SECTION INCLUDES

1.02 REFERENCE STANDARDS

- A. 36 CFR 1191 - Americans with Disabilities Act (ADA) Accessibility Guidelines for Buildings and Facilities; Architectural Barriers Act (ABA) Accessibility Guidelines; current edition.
- B. ADA Standards - Americans with Disabilities Act (ADA) Standards for Accessible Design; 2010.
- C. ICC A117.1 - Accessible and Usable Buildings and Facilities; 2017.

1.03 SUBMITTALS

- A. Product Data: Manufacturer's printed product literature for each type of sign, indicating sign styles, font, foreground and background colors, locations, overall dimensions of each sign.
- B. Signage Schedule: Provide information sufficient to completely define each sign for fabrication, including room number, room name, other text to be applied, sign and letter sizes, fonts, and colors.
 - 1. When room numbers to appear on signs differ from those on drawings, include the drawing room number on schedule.
 - 2. When content of signs is indicated to be determined later, request such information from Owner through Architect at least 2 months prior to start of fabrication; upon request, submit preliminary schedule.
 - 3. Submit for approval by Owner through Architect prior to fabrication.
- C. Selection Samples: Where colors are not specified, submit two sets of color selection charts or chips.

1.04 DELIVERY, STORAGE, AND HANDLING

- A. Package signs as required to prevent damage before installation.
- B. Store tape adhesive at normal room temperature.

1.05 FIELD CONDITIONS

- A. Do not install tape adhesive when ambient temperature is lower than recommended by manufacturer.
- B. Maintain this minimum temperature during and after installation of signs.

PART 2 PRODUCTS

2.01 MANUFACTURERS

- A. Flat Signs:
 - 1. Best Sign Systems, Inc; ____: www.bestsigns.com/#sle.
 - 2. Cosco Industries (ADA signs); ADA Series 1: www.coscoarchitecturalsigns.com/#sle.
 - 3. FASTSIGNS; ____: www.fastsigns.com/#sle.
 - 4. Inpro; ____: www.inprocorp.com/#sle.
 - 5. Mohawk Sign Systems, Inc; ____: www.mohawksign.com/#sle.
 - 6. Seton Identification Products; ____: www.seton.com/aec/#sle.

2.02 SIGNAGE APPLICATIONS

- A. Accessibility Compliance: Signs are required to comply with ADA Standards and ICC A117.1 _____, unless otherwise indicated; in the event of conflicting requirements, comply with the most comprehensive and specific requirements.
- B. Code Required Signage
 - 1. Refer to drawings for size and type of sign.
 - 2. Rest Rooms: Identify with pictograms, the names "MEN" and "WOMEN", room numbers as shown on the drawings, and braille.

3. Stairs/ Elevators: See drawings.
- C. Emergency Evacuation Maps:
 1. Allow for one map per elevator lobby.
 2. Map content to be provided by Owner.
 3. Refer to drawings for size.

2.03 SIGN TYPES

- A. Flat Signs: Signage media without frame.
 1. Edges: Square.
 2. Corners: Square.
 3. Wall Mounting of One-Sided Signs: Tape adhesive.
- B. Color and Font: Unless otherwise indicated:
 1. Character Font: Avenir 55 Roman.
 2. Character Case: Upper and lower case (title case). See drawings.
 3. Background Color: Coordinate with NKU Standards.
 4. Character Color: Coordinate with NKU Standards.

2.04 ACCESSORIES

- A. Tape Adhesive: Double sided tape, permanent adhesive.

PART 3 EXECUTION

3.01 EXAMINATION

- A. Verify that substrate surfaces are ready to receive work.

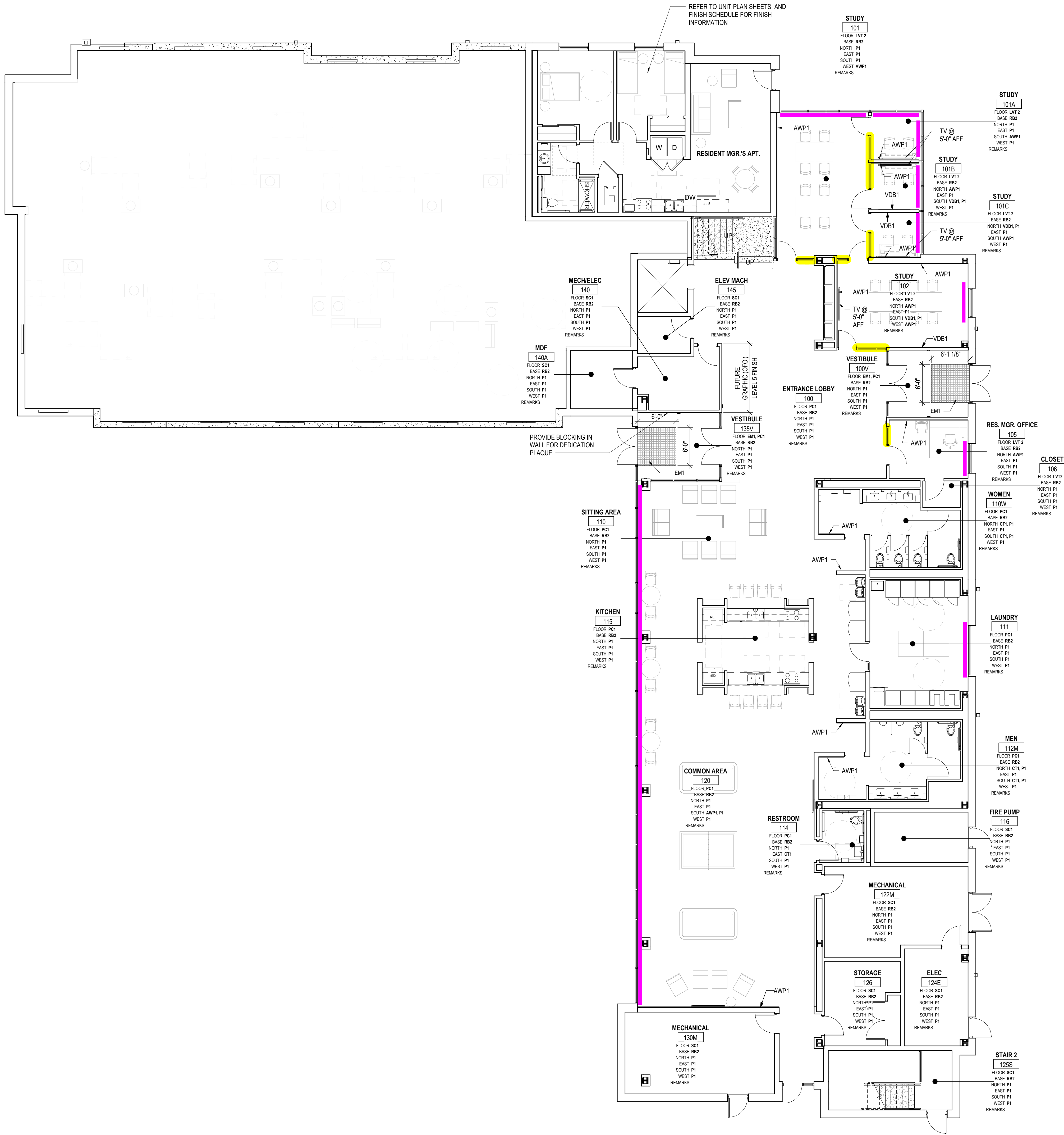
3.02 INSTALLATION

- A. Install in accordance with manufacturer's instructions.
- B. Install neatly, with horizontal edges level.
- C. Locate signs and mount at heights indicated on drawings and in accordance with ADA Standards and ICC A117.1.
- D. Protect from damage until Substantial Completion; repair or replace damaged items.

END OF SECTION 10 14 00

1 1/8" = 1'-0"

COMMON AREA PLAN - LEVEL 00



FINISH LEGEND

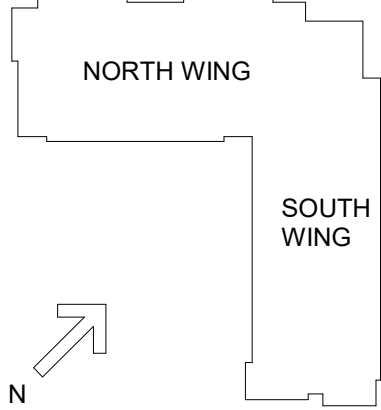
- FLOORS**
Resilient Tile (LV)
LV1: LUXURY VINYL TILE, COLOR 1
LV2: LUXURY VINYL TILE, COLOR 2
- BASE**
Rubber Base (RB)
RB1: RUBBER BASE, COLOR 1
RB2: RUBBER BASE, COLOR 2
- WALLS**
Ceramic Tile (CT)
CT1: FIELD COLOR WALL TILE
CT2: ACCENT COLOR WALL TILE
CT3: FIELD COLOR FLOOR TILE
- Paint (P)**
P1: FIELD COLOR PAINT
P2: ACENT COLOR PAINT
P3: ACENT COLOR PAINT
P4: ACENT COLOR PAINT
P5: ACENT COLOR PAINT
P6: CEILING PAINT
P7: TRIM PAINT
P8: UNDERSIDE OF STRUCTURE PAINT
- Acoustic Wall Panel (AWP)**
AWP1: FABRIC WRAPPED ACOUSTIC WALL PANEL
- CEILING**
Wood Slat Ceiling (WD)
WD-1: DECORATIVE WOOD SLAT GRILLE CEILING
- Acoustical Ceiling**
AC-1: SUSPENDED ACOUSTICAL CEILING TILE
AC-2: SUSPENDED ACOUSTIC FABRIC CLOUD, COLOR 1
AC-3: SUSPENDED ACOUSTIC FABRIC CLOUD, COLOR 2
- MISCELLANEOUS**
Visual Display Board (VDB)
VDB-1: GLASS MARKER BOARD
- Plastic Laminates (PL)**
PL-1: PLASTIC LAMINATE CABINETS
PL-2: PLASTIC LAMINATE CABINETS
- Solid Surface (SS)**
SS-1: UNIT COUNTERTOP
SS-2: COMMON AREA RESTROOM COUNTERTOP
- Quartz (Q)**
Q-1: COMMON AREA KITCHEN COUNTERTOP

- PROPOSED LOCATION OF
ROLLER SHADES
- CURRENTLY NOTED AS GLASS
TO RECEIVE PRIVACY FILM IN
THE FUTURE

STATE OF KENTUCKY APPROVAL

GENERAL NOTES - FINISH PLANS

- STANDARDS AND PROCEDURES FOR THE PREPARATION AND APPLICATION OF INTERIOR FINISHES ARE DEFINED IN THE PROJECT MANUAL. FINISH (SUB) CONTRACTORS ARE REQUIRED TO READ, UNDERSTAND AND FOLLOW ALL RELEVANT SECTIONS OF THE PROJECT MANUAL.
- FINISH MATERIALS ARE LISTED IN THE LEGEND COMPONENT OF THE FINISH SCHEDULE. SPECIFICATIONS ARE INCLUDED IN THE PROJECT MANUAL. ANY CONFLICTS OR DISCREPANCIES BETWEEN THESE TWO SHOULD BE BROUGHT TO THE ARCHITECT'S ATTENTION IMMEDIATELY.
- NO FINISH MATERIAL SUBSTITUTIONS WILL BE ACCEPTED EXCEPT IN THE SPECIFIC CIRCUMSTANCES ENUMERATED IN THE PROJECT MANUAL.
- PAINTED HOLLOW METAL DOORS AND FRAMES TO BE PAINTED TO MATCH ADJACENT WALL COLOR UNLESS NOTED OTHERWISE. HOLLOW METAL FRAMES AT UNIT ENTRY DOORS TO BE PAINTED AN ACCENT PAINT COLOR. MATERIAL INFORMATION FOR ALL OTHER DOORS AND FRAMES IS CONTAINED IN THE DOOR SCHEDULE AND ITS ASSOCIATED LEGENDS.
- ALL VERTICAL TRANSITIONS BETWEEN DIFFERING WALL FINISHES ARE TO BE MADE AT INSIDE CORNERS (UNLESS NOTED OTHERWISE).
- FLOORING MATERIAL DESIGNATED FOR STAIRS IS TO INCLUDE STAIR AND ALL ASSOCIATED TREADS, RISERS, LANDINGS, ETC. (UNLESS NOTED OTHERWISE).
- PAINT DESIGNATED FOR METAL STAIR COMPONENTS IS TO INCLUDE ALL EXPOSED METAL COMPONENTS ASSOCIATED WITH THE STAIR SYSTEM ITSELF, ALL EXPOSED STRUCTURAL STEEL COMPONENTS SUPPORTING THE STAIR SYSTEM (UNLESS NOTED OTHERWISE), AND ALL EXPOSED METAL COMPONENTS OF THE HANDRAIL AND GUARDRAIL SYSTEMS (UNLESS NOTED OTHERWISE). UNDERSIDES OF STAIR RUNS AND LANDINGS ARE CONSIDERED "EXPOSED" IN ALL SITUATIONS.
- FOR CLARITY, SOME FINISH INFORMATION HAS BEEN PRESENTED GRAPHICALLY IN THE FORM OF FINISH AND FLOORING PLANS. SHOULD THERE BE A DISCREPANCY BETWEEN THE FINISH SCHEDULE AND THESE PLANS, THE ARCHITECT SHOULD BE NOTIFIED IMMEDIATELY. FOR THE PURPOSE OF BIDDING, INFORMATION DETAILED ON THE FINISH FLOOR PLANS AND FLOORING PLANS IS TO TAKE PRECEDENCE OVER THE FINISH SCHEDULE UNTIL FURTHER CLARIFICATION CAN BE GIVEN. FOR AREAS NOT SPECIFICALLY DETAILED ON THESE PLANS, THE FINISH SCHEDULE PERTAINS.
- PAINT DESIGNATED FOR EXPOSED OVERHEAD STRUCTURE IS TO INCLUDE ALL EXPOSED COMPONENTS INCLUDING (BUT NOT EXCLUSIVE TO) DECKING, STRUCTURAL MEMBERS, MECHANICAL AND ELECTRICAL DELIVERY SYSTEMS, FIRE PROTECTION SYSTEMS (EXCLUDING SPRINKLER HEADS), AND ALL OTHER MISCELLANEOUS BUILDING SYSTEMS LOCATED OVERHEAD. EACH OF THE AFOREMENTIONED CATEGORIES IS TO INCLUDE ANY AND ALL ASSOCIATED SUPPORTS, FASTENERS, HANGERS, STRUTS, BRACES, BRACKETS, ETC.
- REFER TO REFLECTED CEILING PLANS AND SPECIFICATION MANUAL FOR ALL CEILING MATERIAL AND FINISH INFORMATION.
- FOR EPOXY OR INTUMESCENT PAINT COLOR REFER TO PAINT SCHEDULE NUMBERS.
- APPROPRIATE METAL OR VINYL TRANSITION STRIPS MUST BE PROVIDED AT ALL FINISH MATERIAL FLOORING CHANGES. GENERAL CONTRACTOR TO SUBMIT SHOP DRAWINGS FOR ALL FLOORING TRANSITIONS AND AREAS IN WHICH FLOORING PATTERNS ARE SHOWN. SEE FLOOR FINISH PLANS, DETAILS AND NOTES FOR SPECIFIC INFORMATION.
- WALL PAINT INDICATED FOR CURTAIN WALL LOCATIONS APPLIES TO ALL ASSOCIATED DRYWALL COMPONENTS (CURBS, HEADERS, BULKHEADS, ETC.) AND SHOULD NOT BE INTERPRETED AS APPLYING TO CURTAIN WALL COMPONENTS OR GLASS.
- FLOORING CONTRACTOR(S) IS RESPONSIBLE FOR COORDINATING FINISHED FLOOR ELEVATIONS WITH ALL ANY FLOOR MOUNTED COMPONENTS (RECEPTACLES, ACCESS PANELS, ETC.) SO THAT COMPONENTS ARE INTEGRATED AND FLUSH.



#	DATE	CHANGE DESCRIPTION

NK UNIVERSITY
NEW RESIDENCE HALL
KENTON DRIVE & CARROLL DRIVE
HIGHLAND HEIGHTS, KY 41099
FOR
NORTHERN KENTUCKY UNIVERSITY

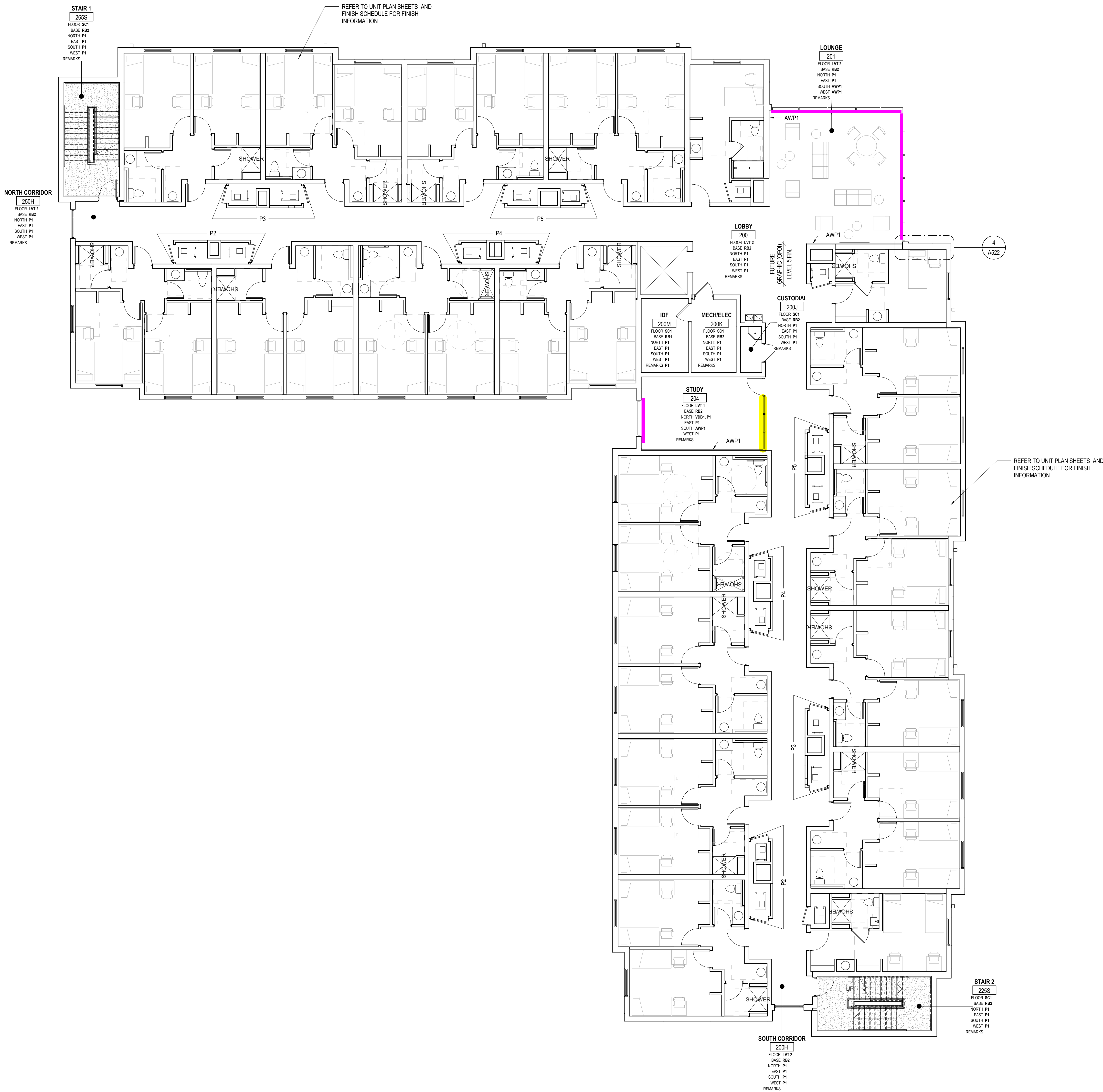
MOODY-NOLAN
434 MADISON AVENUE
COVINGTON, KY 41011
PHONE: (859) 957-1277
FAX: (859) 957-1260

LORD AECK SARGENT
A WATERFIRM COMPANY
269 W Main St.
Suite 500
Lexington, KY 40507 USA
877-929-1400
www.lordaecksargent.com

ROLLER SHADE LOCATION
DIAGRAM

JANUARY 30, 2020	
DRAWN BY XXX	CHECKED BY XXX
#18237	
RS01	
BID & PERMIT SUBMITTAL	

1 TYPICAL PLAN - LEVELS 02-05
1/8" = 1'-0"



FINISH LEGEND

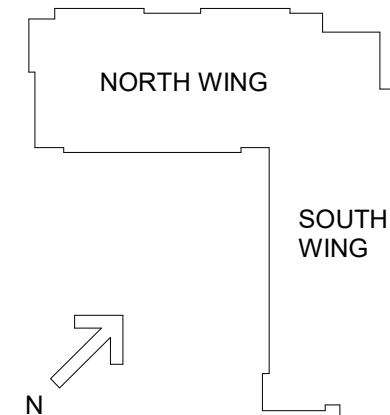
- FLOORS**
- Resilient Tile (LVT)**
LV1: LUXURY VINYL TILE, COLOR 1
LV2: LUXURY VINYL TILE, COLOR 2
- BASE**
- Rubber Base (RB)**
RB1: RUBBER BASE, COLOR 1
RB2: RUBBER BASE, COLOR 2
- WALLS**
- Ceramic Tile (CT)**
CT1: FIELD COLOR WALL TILE
CT2: ACCENT COLOR WALL TILE
CT3: FIELD COLOR FLOOR TILE
- Paint (P)**
P1: FIELD COLOR PAINT
P2: ACENT COLOR PAINT
P3: ACENT COLOR PAINT
P4: ACENT COLOR PAINT
P5: ACENT COLOR PAINT
P6: CEILING PAINT
P7: TRIM PAINT
P8: UNDERSIDE OF STRUCTURE PAINT
- Acoustic Wall Panel (AWP)**
AWP1: FABRIC WRAPPED ACOUSTIC WALL PANEL
- CEILING**
- Wood Slat Ceiling (WD)**
WD-1: DECORATIVE WOOD SLAT/ GRILLE CEILING
- Acoustical Ceiling**
AC-1: SUSPENDED ACOUSTICAL CEILING TILE
AC-2: SUSPENDED ACOUSTIC FABRIC CLOUD, COLOR 1
AC-3: SUSPENDED ACOUSTIC FABRIC CLOUD, COLOR 2
- MISCELLANEOUS**
- Visual Display Board (VDB)**
VDB-1: GLASS MARKER BOARD
- Plastic Laminate (PL)**
PL-1: PLASTIC LAMINATE CABINETS
PL-2: PLASTIC LAMINATE CABINETS
- Solid Surface (SS)**
SS-1: UNIT COUNTERTOP
SS-2: COMMON AREA RESTROOM COUNTERTOP
- Quartz (Q)**
Q-1: COMMON AREA KITCHEN COUNTERTOP

- PROPOSED LOCATION OF ROLLER SHADES
- CURRENTLY NOTED AS GLASS TO RECEIVE PRIVACY FILM IN THE FUTURE

STATE OF KENTUCKY APPROVAL

GENERAL NOTES - FINISH PLANS

- STANDARDS AND PROCEDURES FOR THE PREPARATION AND APPLICATION OF INTERIOR FINISHES ARE DEFINED IN THE PROJECT MANUAL. FINISH (SUB) CONTRACTORS ARE REQUIRED TO READ, UNDERSTAND AND FOLLOW ALL RELEVANT SECTIONS OF THE PROJECT MANUAL.
- FINISH MATERIALS ARE LISTED IN THE LEGEND COMPONENT OF THE FINISH SCHEDULE. SPECIFICATIONS ARE INCLUDED IN THE PROJECT MANUAL. ANY CONFLICTS OR DISCREPANCIES BETWEEN THESE TWO SHOULD BE BROUGHT TO THE ARCHITECT'S ATTENTION IMMEDIATELY.
- NO FINISH MATERIAL SUBSTITUTIONS WILL BE ACCEPTED EXCEPT IN THE SPECIFIC CIRCUMSTANCES ENUMERATED IN THE PROJECT MANUAL.
- PAINTED HOLLOW METAL DOORS AND FRAMES TO BE PAINTED TO MATCH ADJACENT WALL COLOR UNLESS NOTED OTHERWISE. HOLLOW METAL FRAMES AT UNIT ENTRY DOORS TO BE PAINTED AN ACCENT PAINT COLOR. MATERIAL INFORMATION FOR ALL OTHER DOORS AND FRAMES IS CONTAINED IN THE DOOR SCHEDULE AND ITS ASSOCIATED LEGENDS.
- ALL VERTICAL TRANSITIONS BETWEEN DIFFERING WALL FINISHES ARE TO BE MADE AT INSIDE CORNERS (UNLESS NOTED OTHERWISE).
- FLOORING MATERIAL DESIGNATED FOR STAIRS IS TO INCLUDE STAIR AND ALL ASSOCIATED TREADS, RISERS, LANDINGS, ETC. (UNLESS NOTED OTHERWISE).
- PAINT DESIGNATED FOR METAL STAIR COMPONENTS IS TO INCLUDE ALL EXPOSED METAL COMPONENTS ASSOCIATED WITH THE STAIR SYSTEM ITSELF, ALL EXPOSED STRUCTURAL STEEL COMPONENTS SUPPORTING THE STAIR SYSTEM (UNLESS NOTED OTHERWISE), AND ALL EXPOSED METAL COMPONENTS OF THE HANDRAIL AND GUARDRAIL SYSTEMS (UNLESS NOTED OTHERWISE). UNDERSIDES OF STAIR RUNS AND LANDINGS ARE CONSIDERED "EXPOSED" IN ALL SITUATIONS.
- FOR CLARITY, SOME FINISH INFORMATION HAS BEEN PRESENTED GRAPHICALLY IN THE FORM OF FINISH AND FLOORING PLANS. SHOULD THERE BE A DISCREPANCY BETWEEN THE FINISH SCHEDULE AND THESE PLANS, THE ARCHITECT SHOULD BE NOTIFIED IMMEDIATELY. FOR THE PURPOSE OF BIDDING, INFORMATION DETAILED ON THE FINISH FLOOR PLANS AND FLOORING PLANS IS TO TAKE PRECEDENCE OVER THE FINISH SCHEDULE UNTIL FURTHER CLARIFICATION CAN BE GIVEN. FOR AREAS NOT SPECIFICALLY DETAILED ON THESE PLANS, THE FINISH SCHEDULE PERTAINS.
- PAINT DESIGNATED FOR EXPOSED OVERHEAD STRUCTURE IS TO INCLUDE ALL EXPOSED COMPONENTS INCLUDING (BUT NOT EXCLUSIVE TO) DECKING, STRUCTURAL MEMBERS, MECHANICAL AND ELECTRICAL DELIVERY SYSTEMS, FIRE PROTECTION SYSTEMS (EXCLUDING SPRINKLER HEADS), AND ALL OTHER MISCELLANEOUS BUILDING SYSTEMS LOCATED OVERHEAD. EACH OF THE AFOREMENTIONED CATEGORIES IS TO INCLUDE ANY AND ALL ASSOCIATED SUPPORTS, FASTENERS, HANGERS, STRUTS, BRACES, BRACKETS, ETC.
- REFER TO REFLECTED CEILING PLANS AND SPECIFICATION MANUAL FOR ALL CEILING MATERIAL AND FINISH INFORMATION.
- FOR EPOXY OR INTUMESCENT PAINT COLOR REFER TO PAINT SCHEDULE NUMBERS.
- APPROPRIATE METAL OR VINYL TRANSITION STRIPS MUST BE PROVIDED AT ALL FINISH MATERIAL FLOORING CHANGES. GENERAL CONTRACTOR TO SUBMIT SHOP DRAWINGS FOR ALL FLOORING TRANSITIONS AND AREAS IN WHICH FLOORING PATTERNS ARE SHOWN. SEE FLOOR FINISH PLANS, DETAILS AND NOTES FOR SPECIFIC INFORMATION.
- WALL PAINT INDICATED FOR CURTAIN WALL LOCATIONS APPLIES TO ALL ASSOCIATED DRYWALL COMPONENTS (CURBS, HEADERS, BULKHEADS, ETC.) AND SHOULD NOT BE INTERPRETED AS APPLYING TO CURTAIN WALL COMPONENTS OR GLASS.
- FLOORING CONTRACTOR(S) IS RESPONSIBLE FOR COORDINATING FINISHED FLOOR ELEVATIONS WITH ALL ANY FLOOR MOUNTED COMPONENTS (RECEPTACLES, ACCESS PANELS, ETC.) SO THAT COMPONENTS ARE INTEGRATED AND FLUSH.



#	DATE	CHANGE DESCRIPTION



NEW RESIDENCE HALL
KENTON DRIVE & CARROLL DRIVE
HIGHLAND HEIGHTS, KY 41099
FOR
NORTHERN KENTUCKY UNIVERSITY



434 MADISON AVENUE
COVINGTON, KY 41011
PHONE: (859) 957-1277
FAX: (859) 957-1280



269 W Main St.
Suite 500
Lexington, KY 40507 USA
877-929-1400
www.lordaecksargent.com

DRAWING TITLE:
ROLLER SHADE LOCATION
DIAGRAM

JANUARY 30, 2020	
DRAWN BY: XXX	CHECKED BY: XXX
#18237	
RS02	
BID & PERMIT SUBMITTAL	